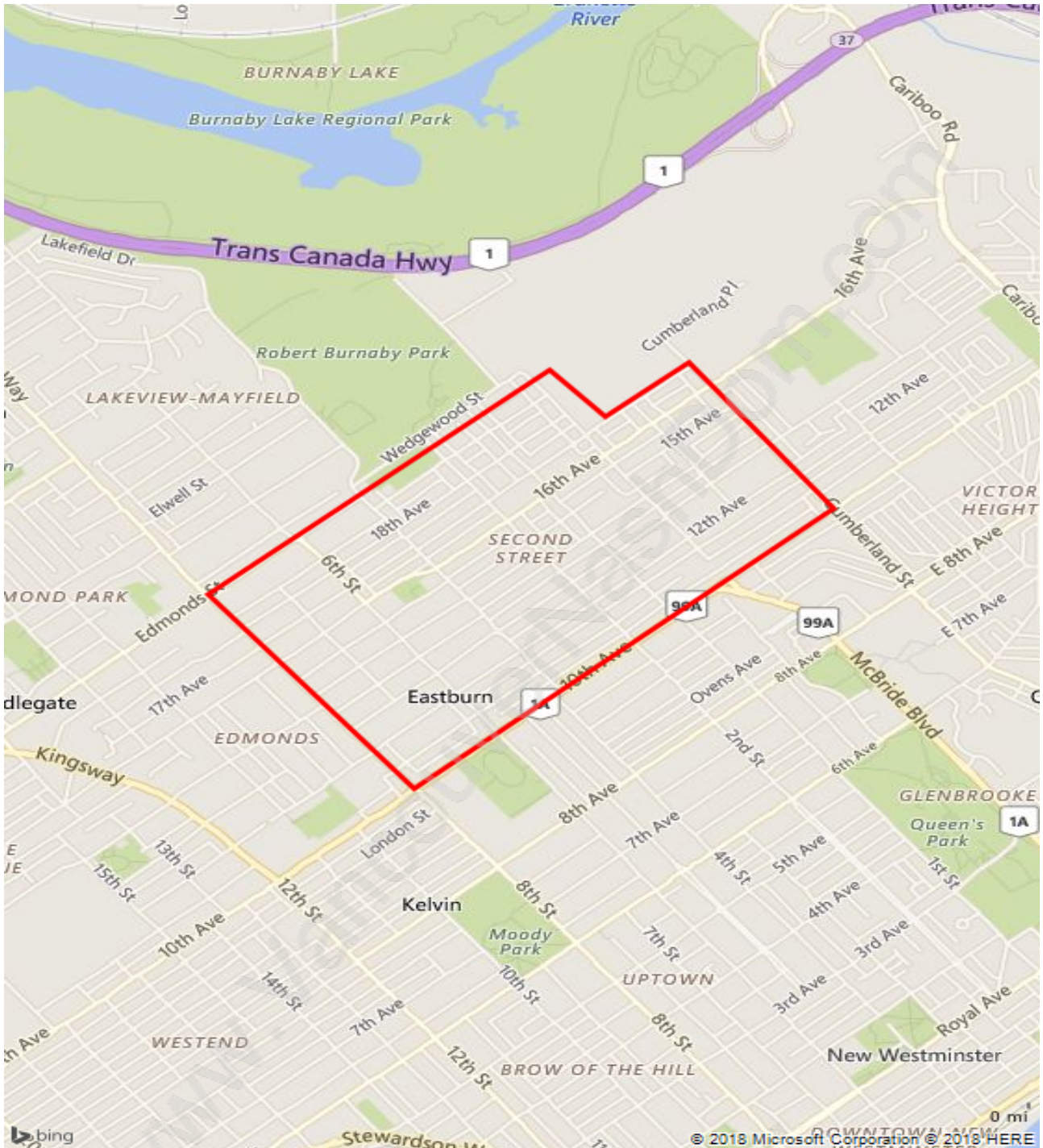
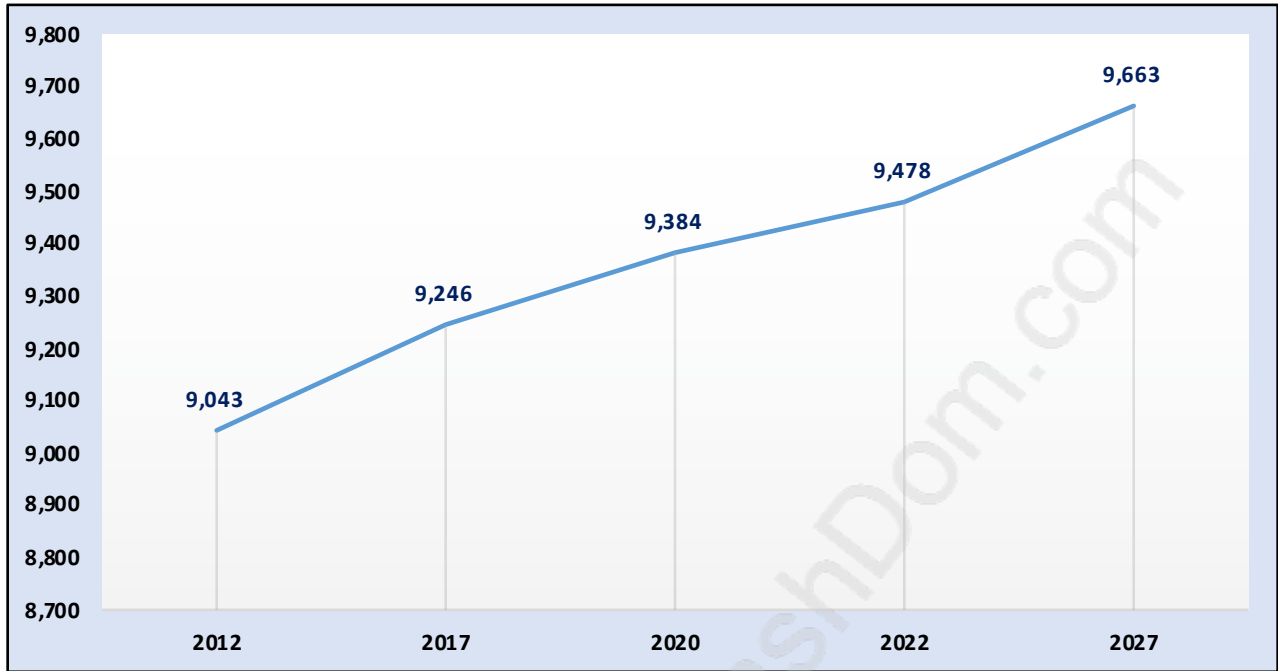


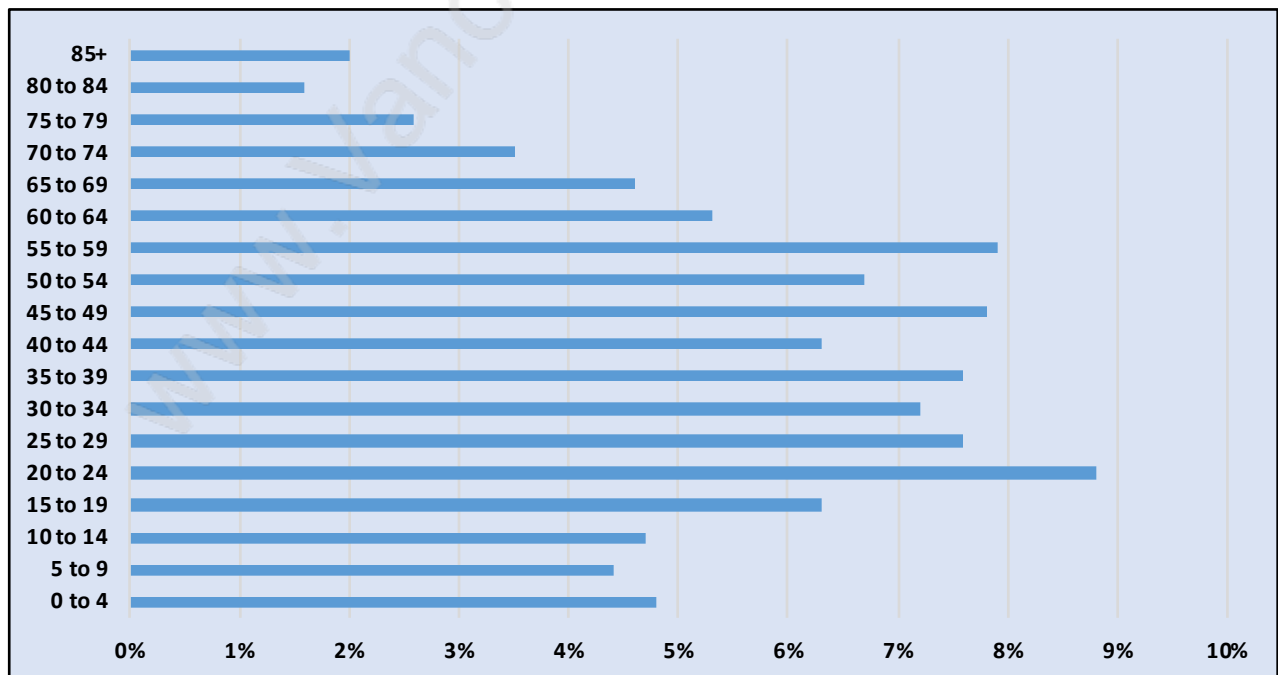
East Burnaby



Population Trends in East Burnaby

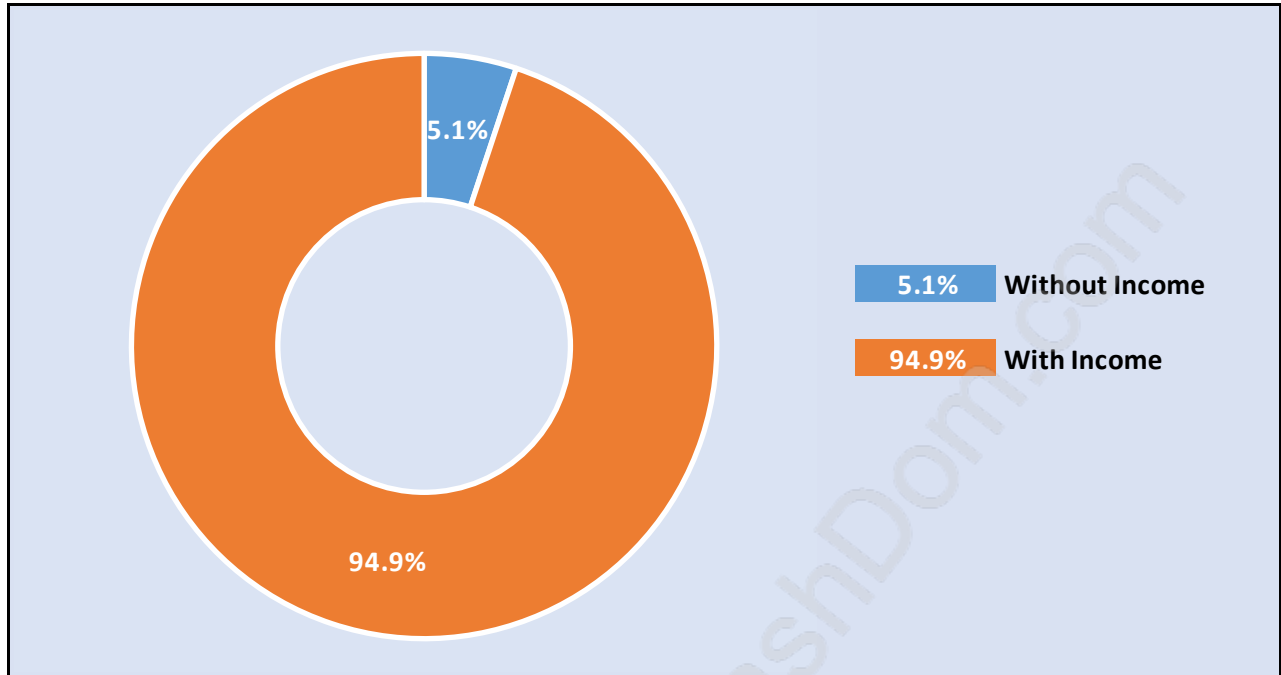


Population by Age in East Burnaby



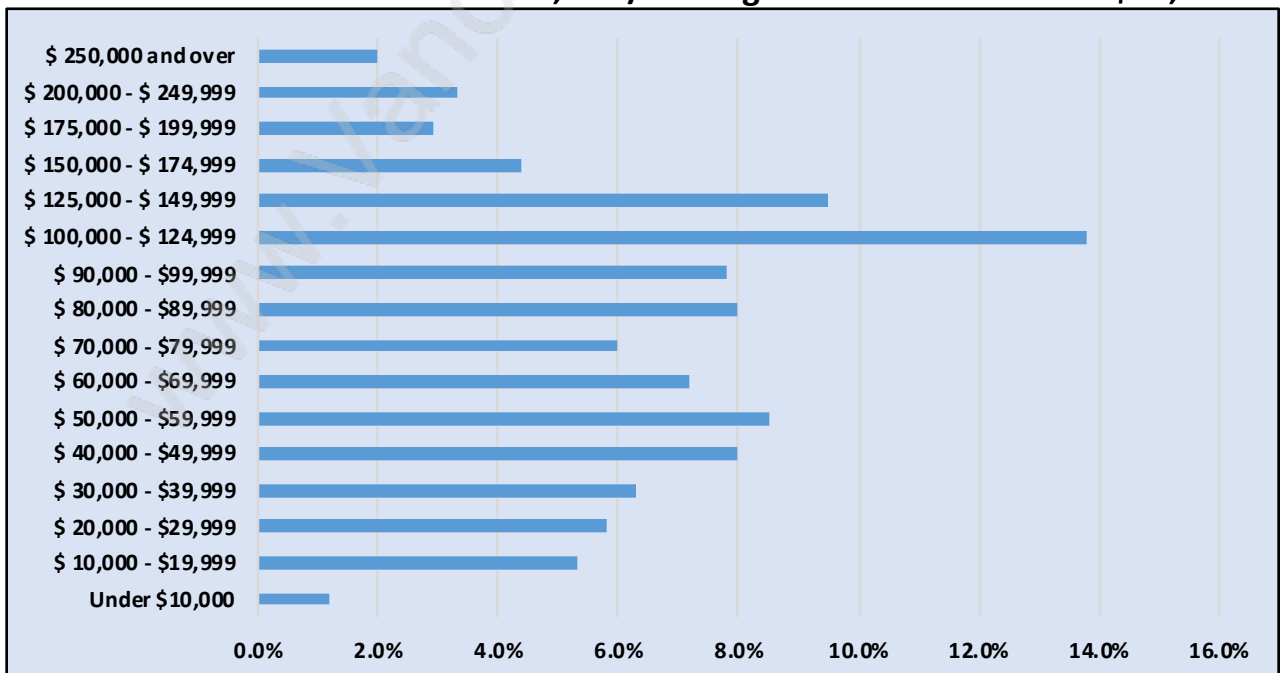
Population Age 15+ by Income Status in East Burnaby

Total Population Age 15 - 7,805



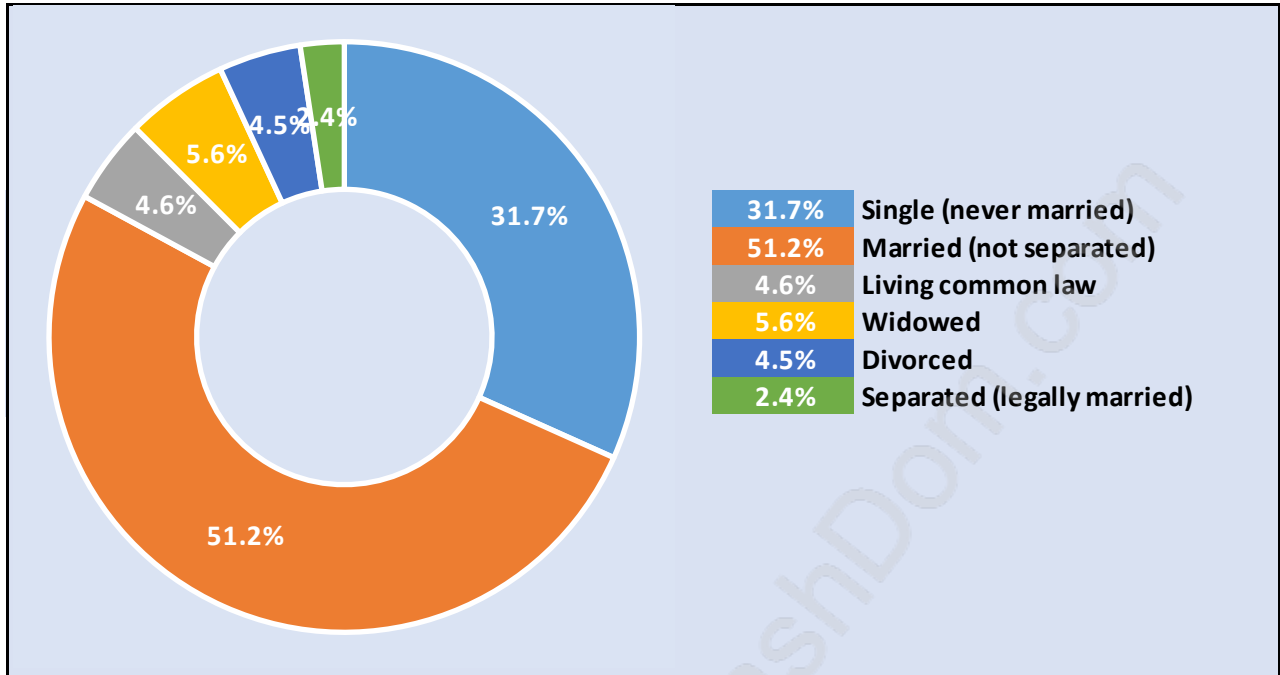
Households by Income in East Burnaby

Total Number of Households - 2,829 / Average Household Income - \$94,374



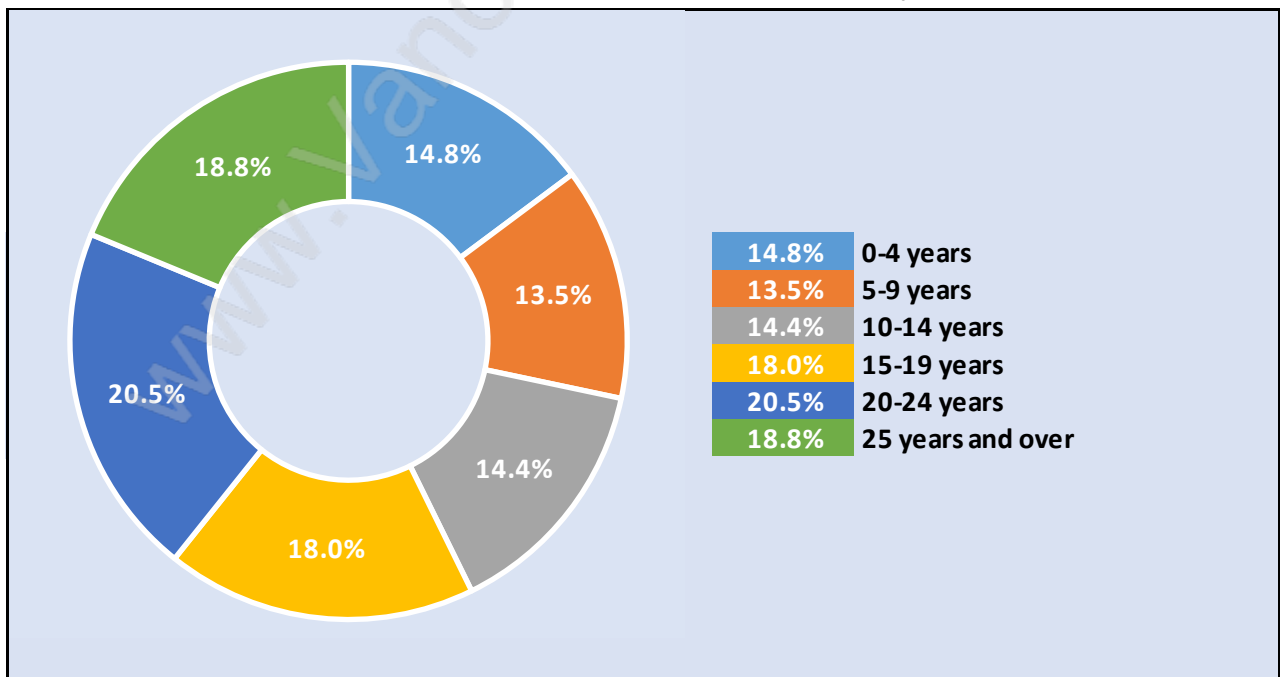
Families in East Burnaby

Average Persons per Family - 3.4



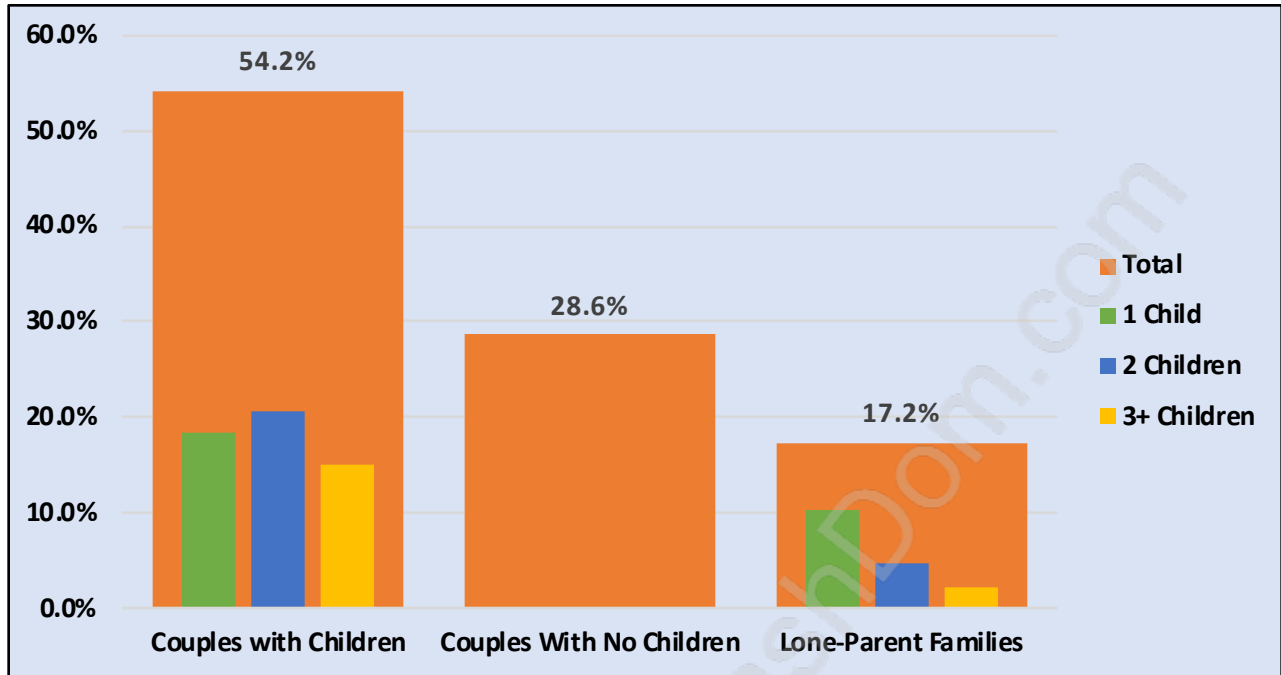
Children at Home in East Burnaby

Total Number of Children at Home - 2,996



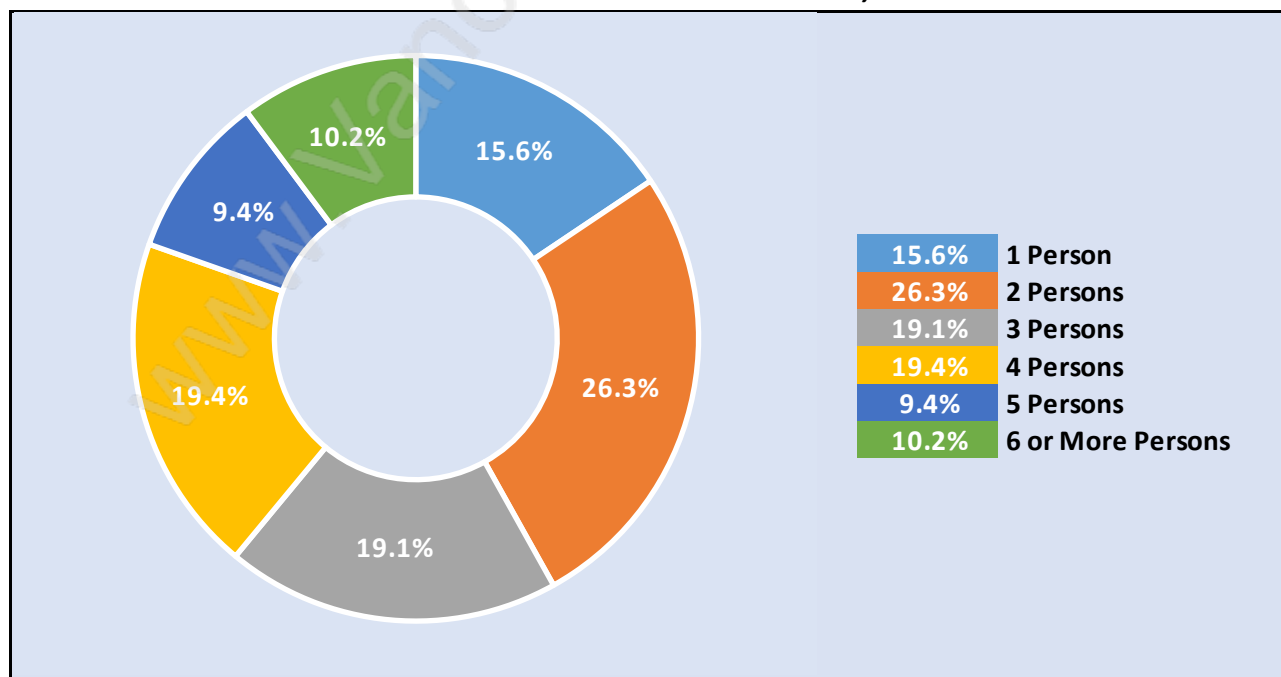
Family Structure in East Burnaby

Total Number of Families - 2,255 / Average Persons per Family - 3.4

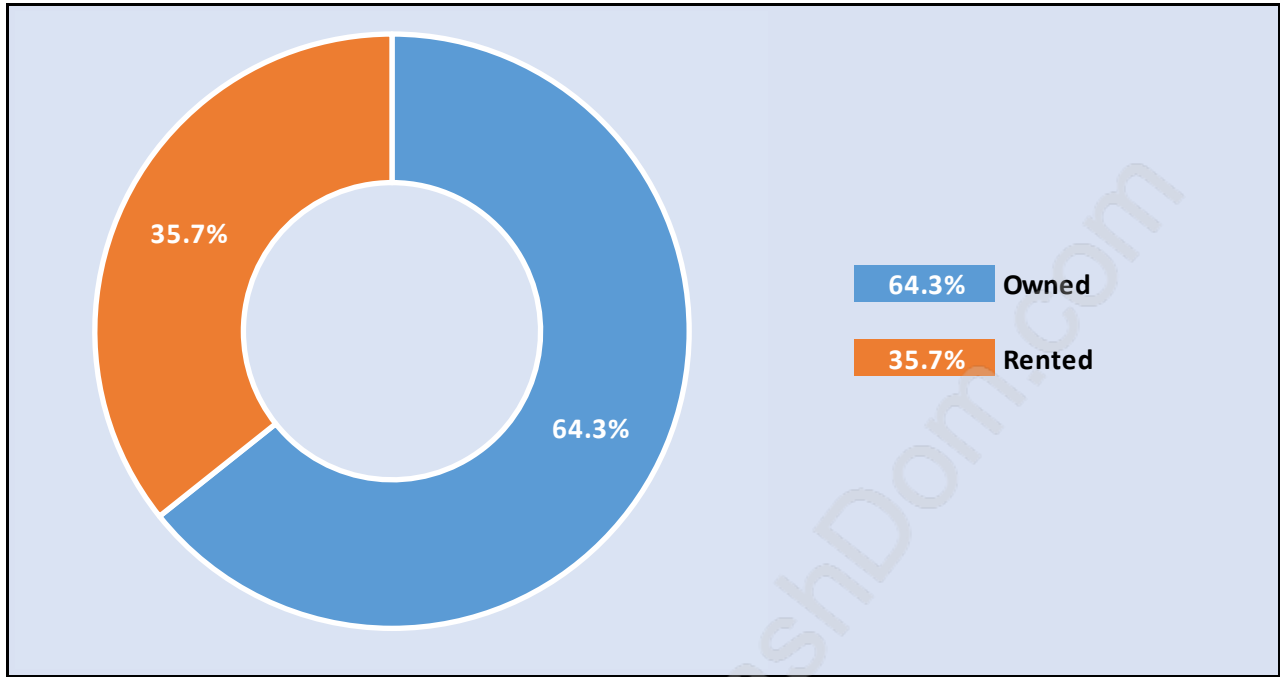


Households by Household Size in East Burnaby

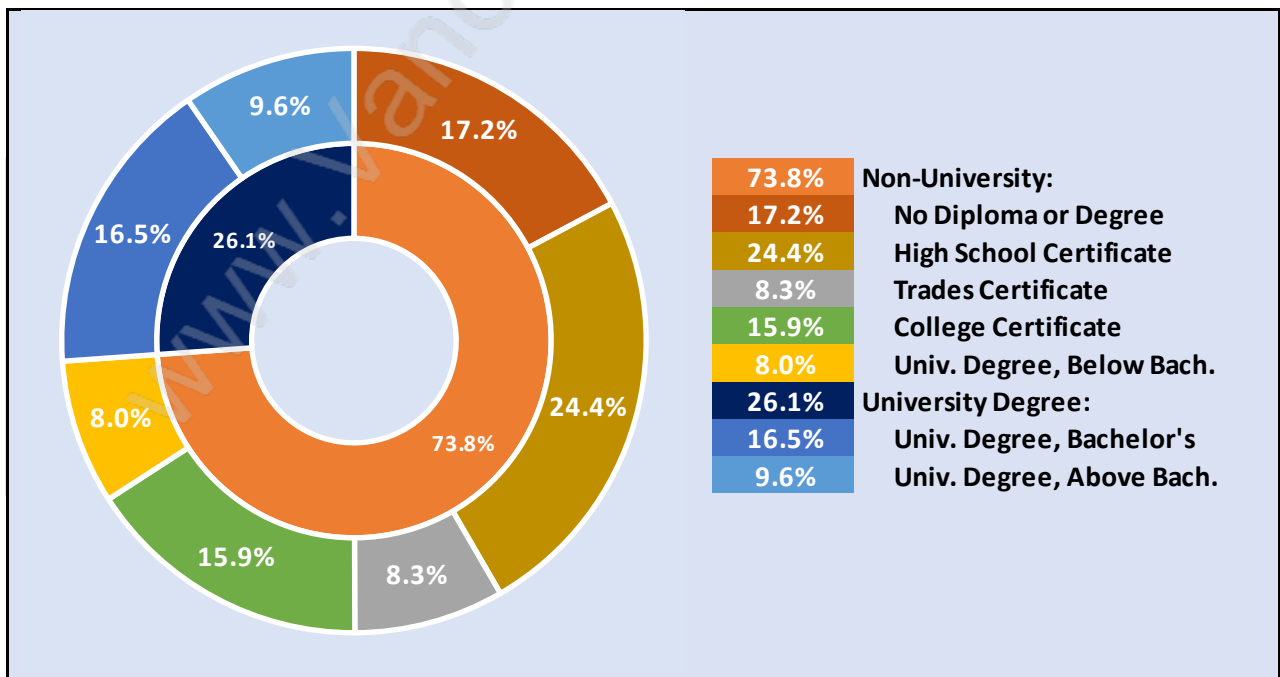
Total Number of Households - 2,829



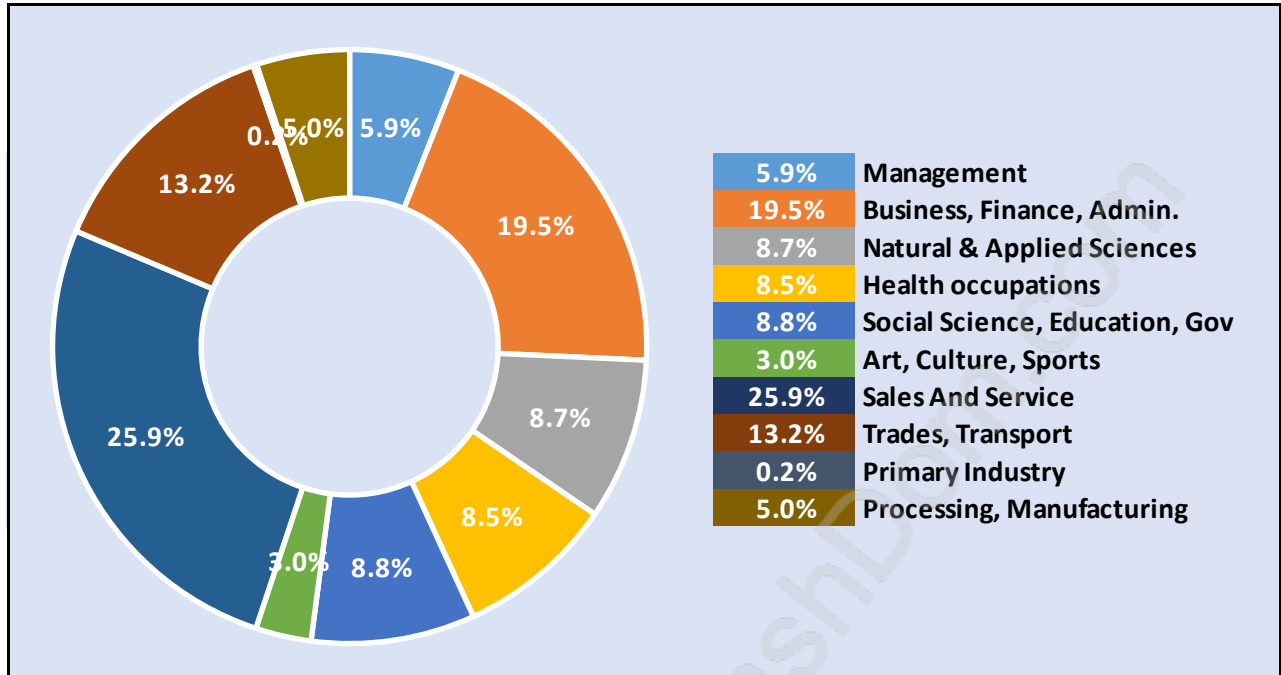
Dwellings in East Burnaby



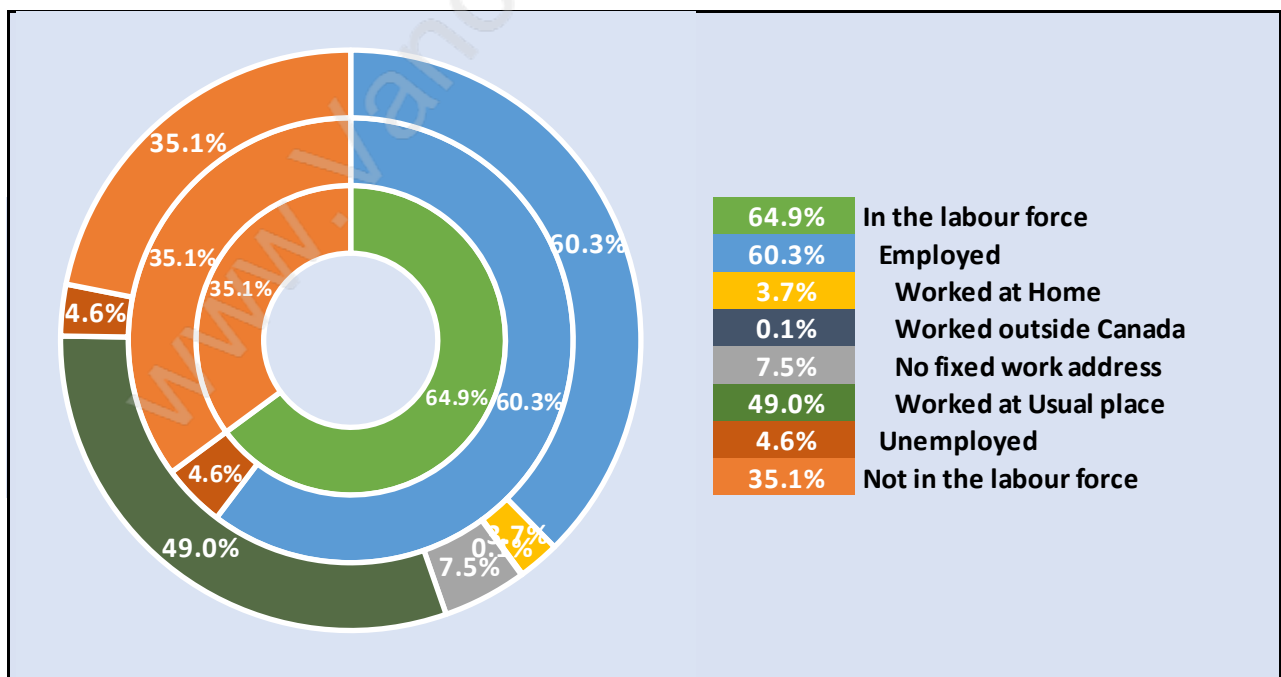
Population Age 15+ in East Burnaby



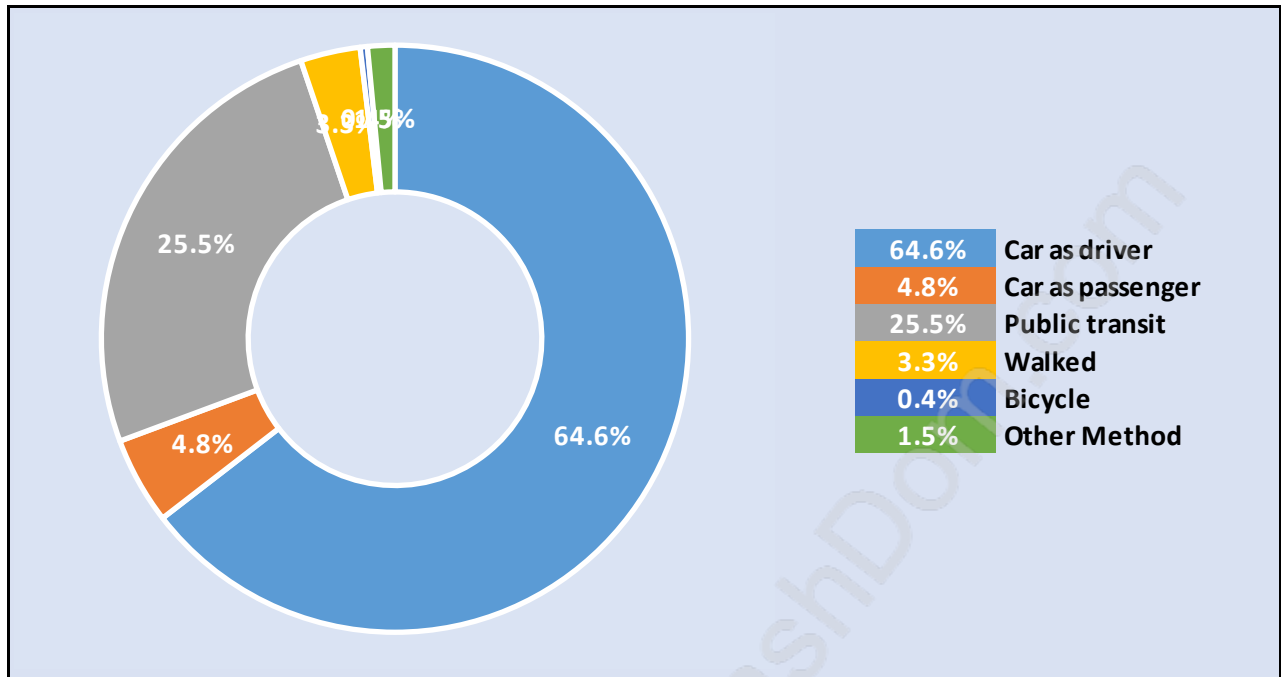
Labour Force by Occupation in East Burnaby



Labour Force Participation in East Burnaby

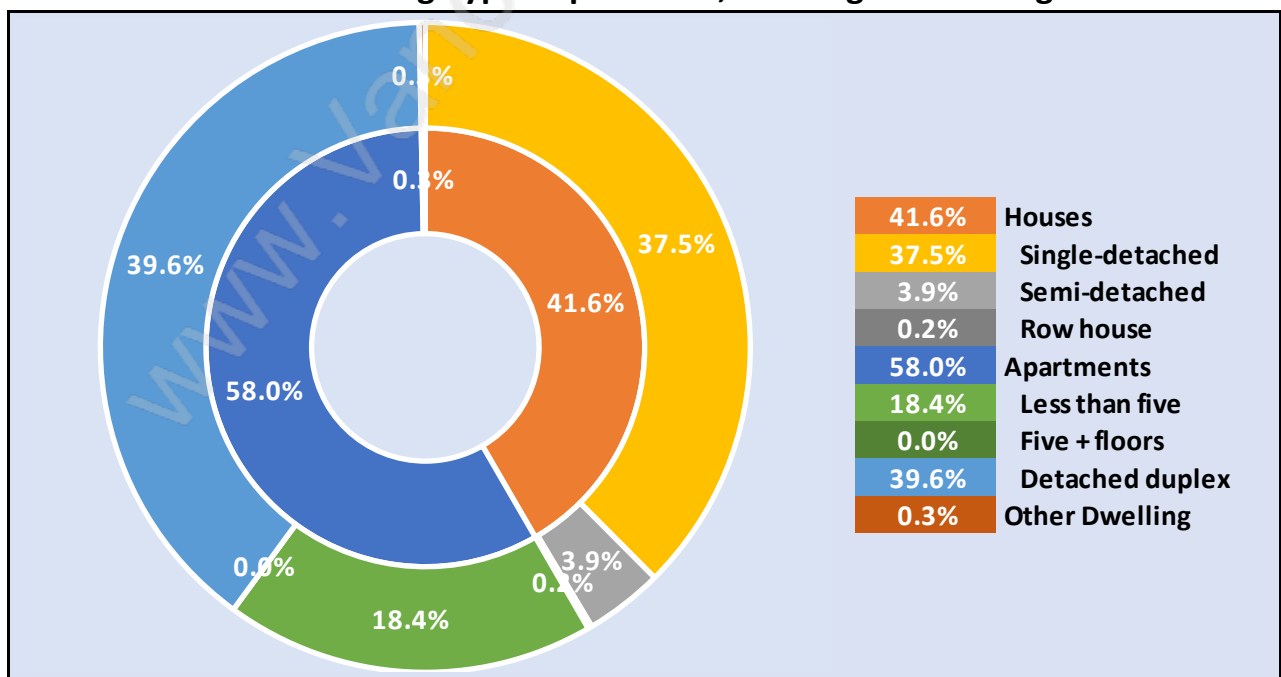


Travel To Work in (from) East Burnaby



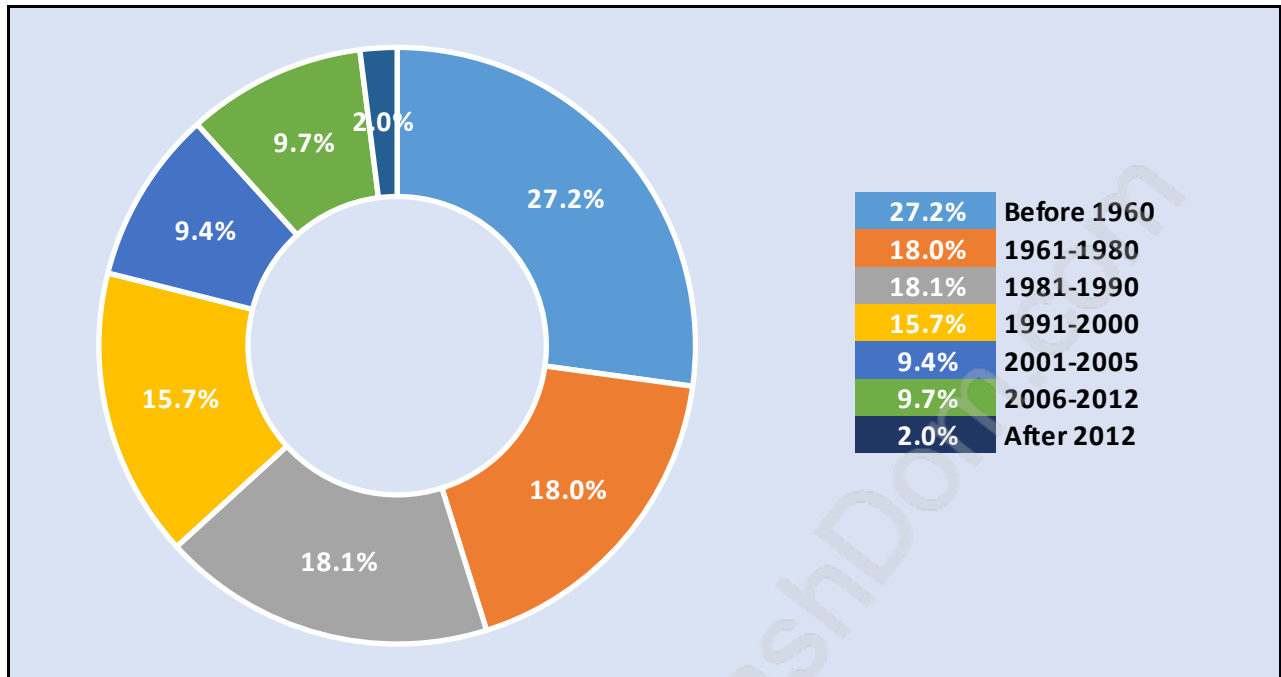
Occupied Dwellings by Structure Type in East Burnaby

Dominant Bulding Type - Apartment, building low and high rise

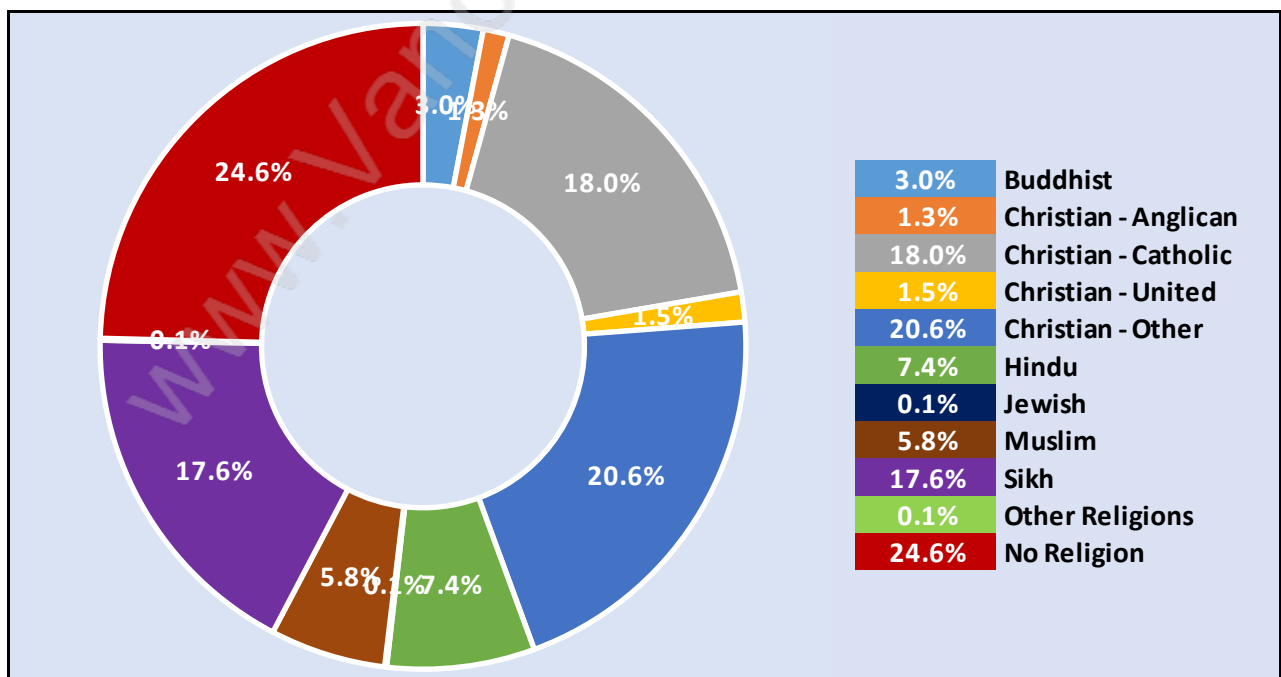


Private Dwellings by Period of Construction in East Burnaby

Dominant Period of Construction - Before 1960



Population by Religion in East Burnaby



Population by Home Languages in East Burnaby

