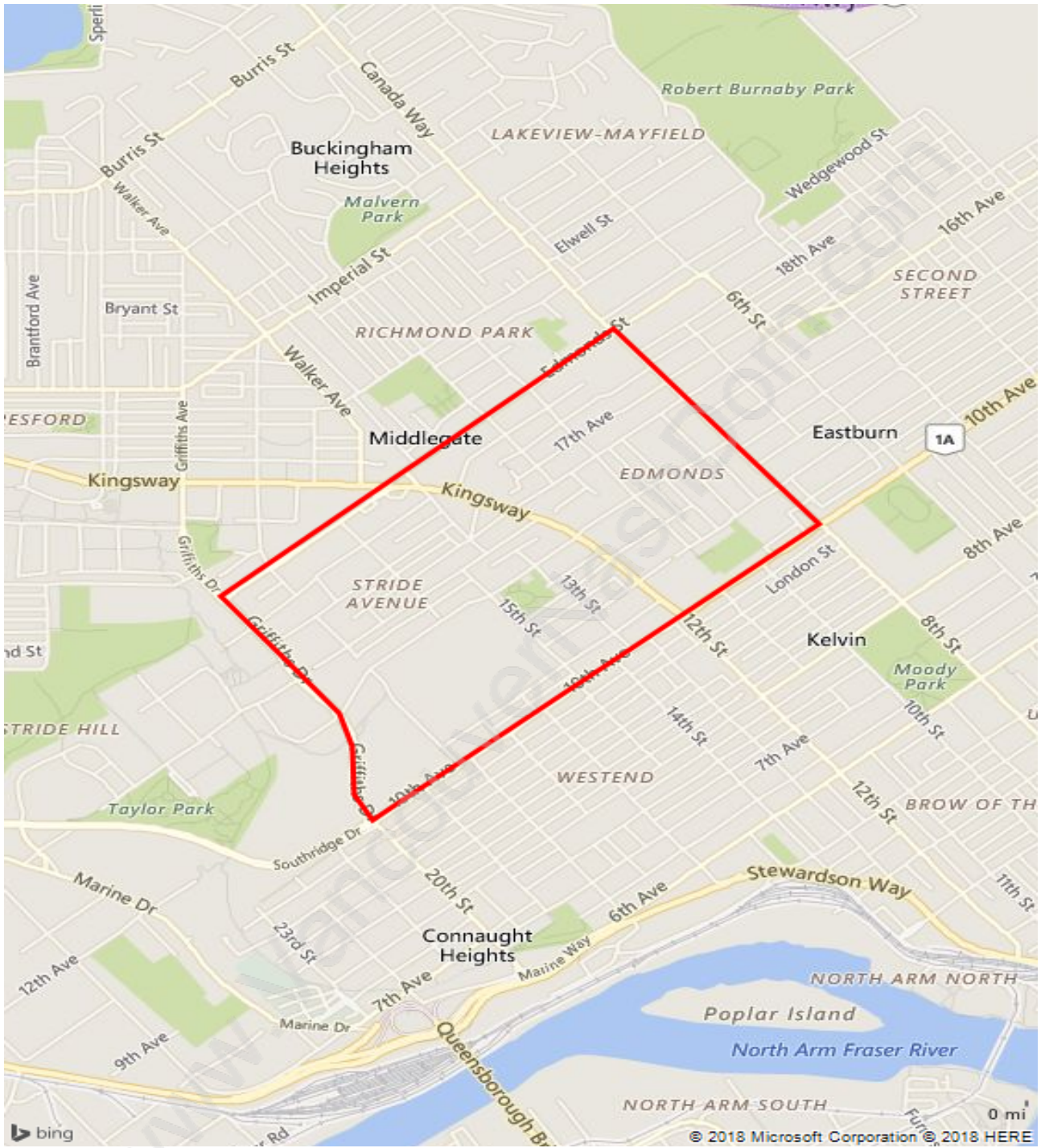
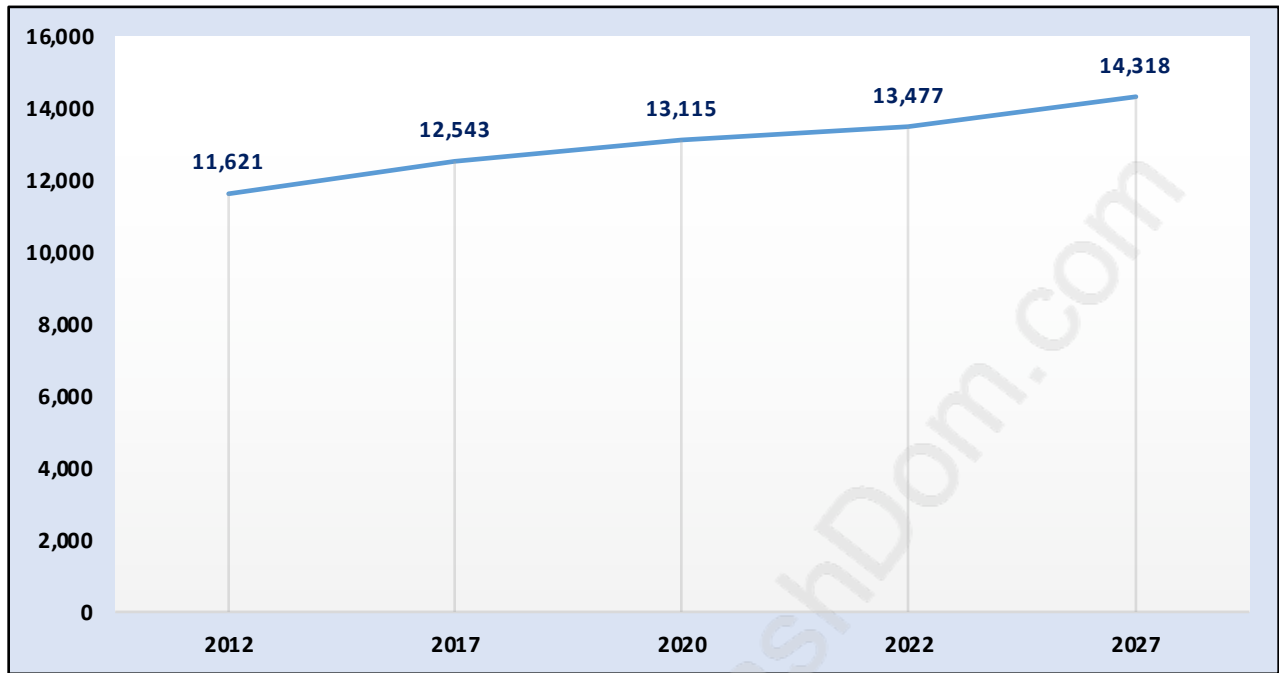


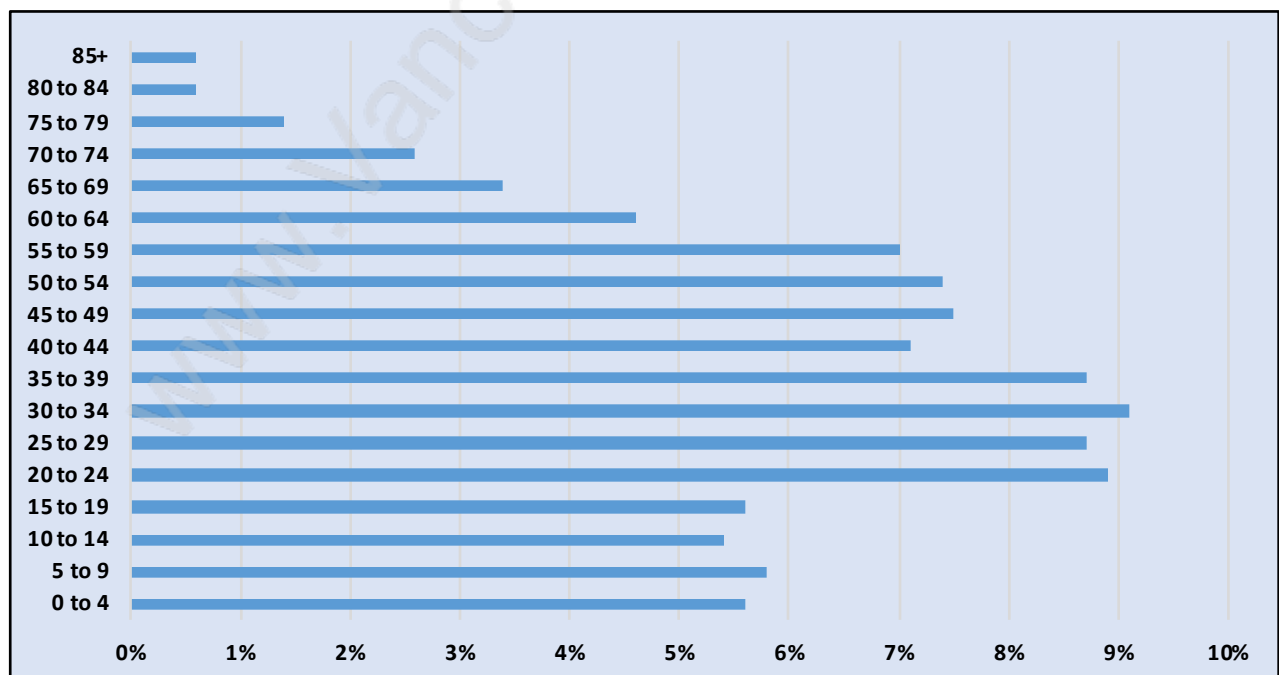
Edmonds



Population Trends in Edmonds

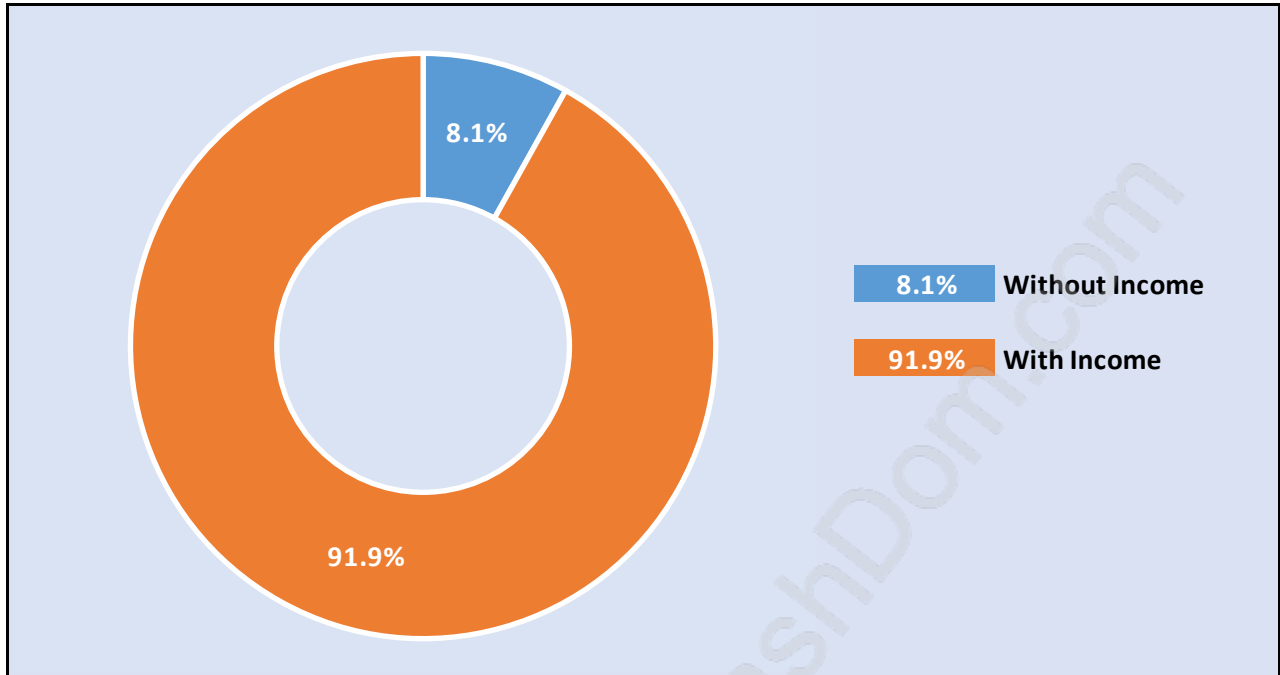


Population by Age in Edmonds



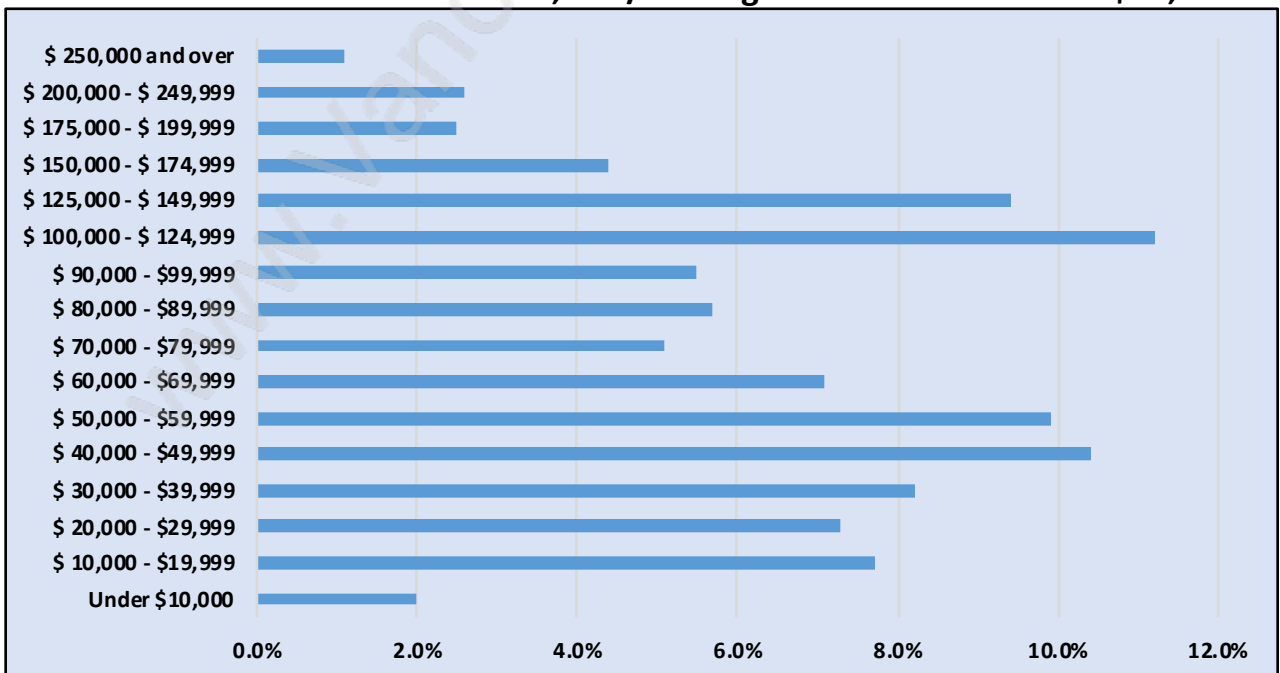
Population Age 15+ by Income Status in Edmonds

Total Population Age 15 - 10,428



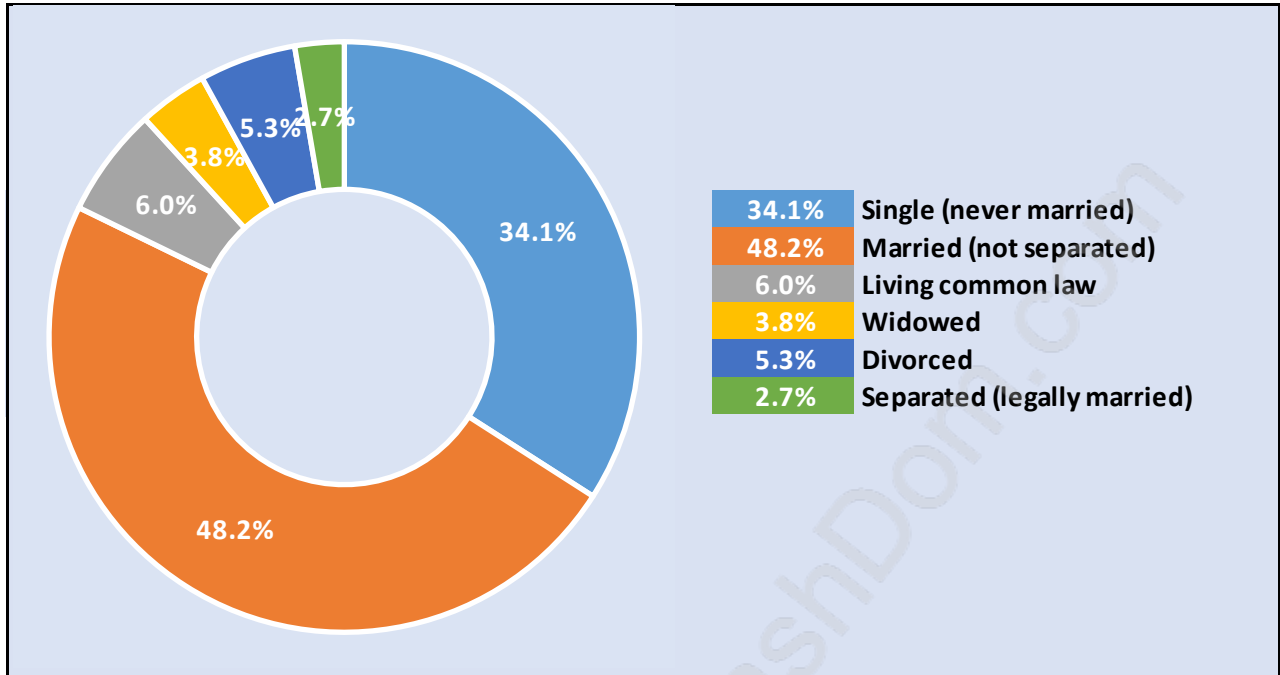
Households by Income in Edmonds

Total Number of Households - 4,254 / Average Household Income - \$83,496



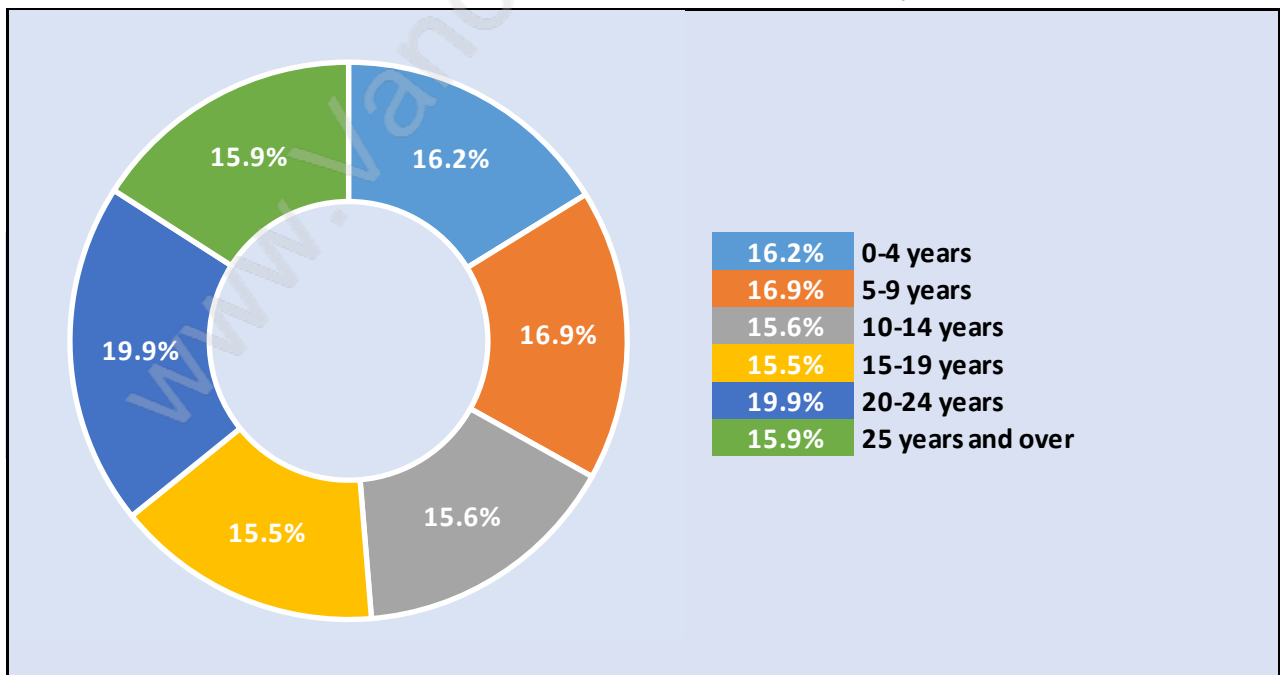
Families in Edmonds

Average Persons per Family - 3.2



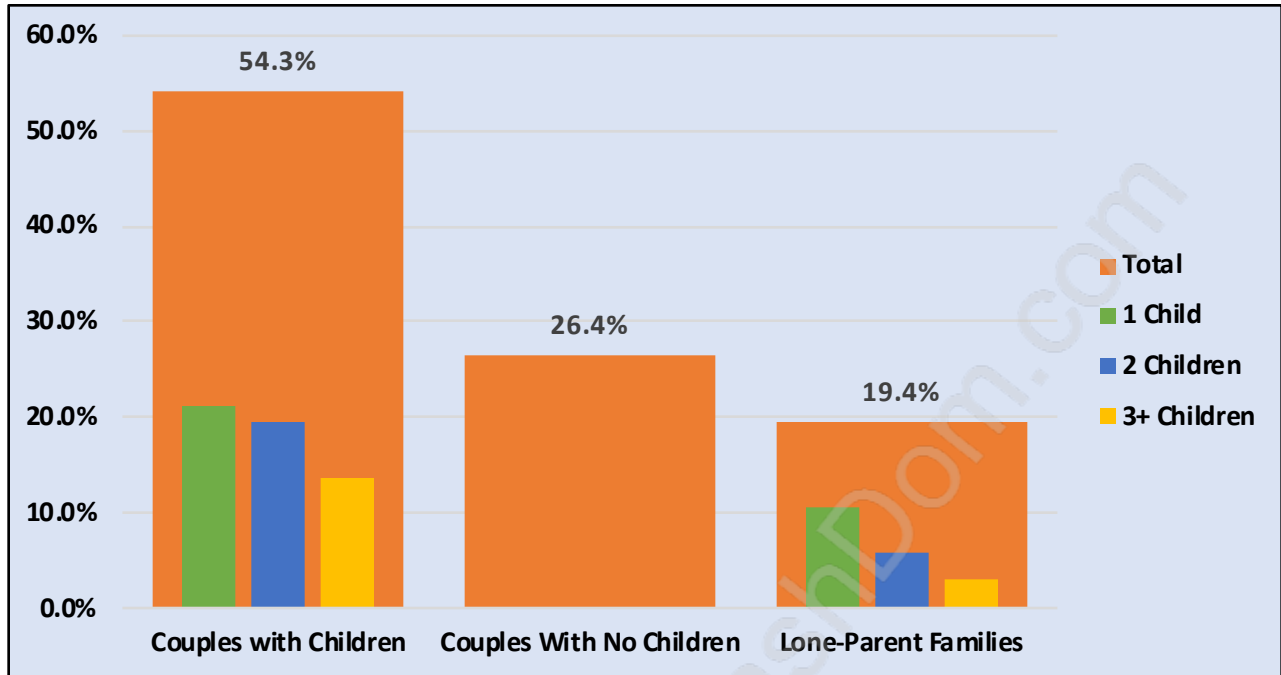
Children at Home in Edmonds

Total Number of Children at Home - 4,248



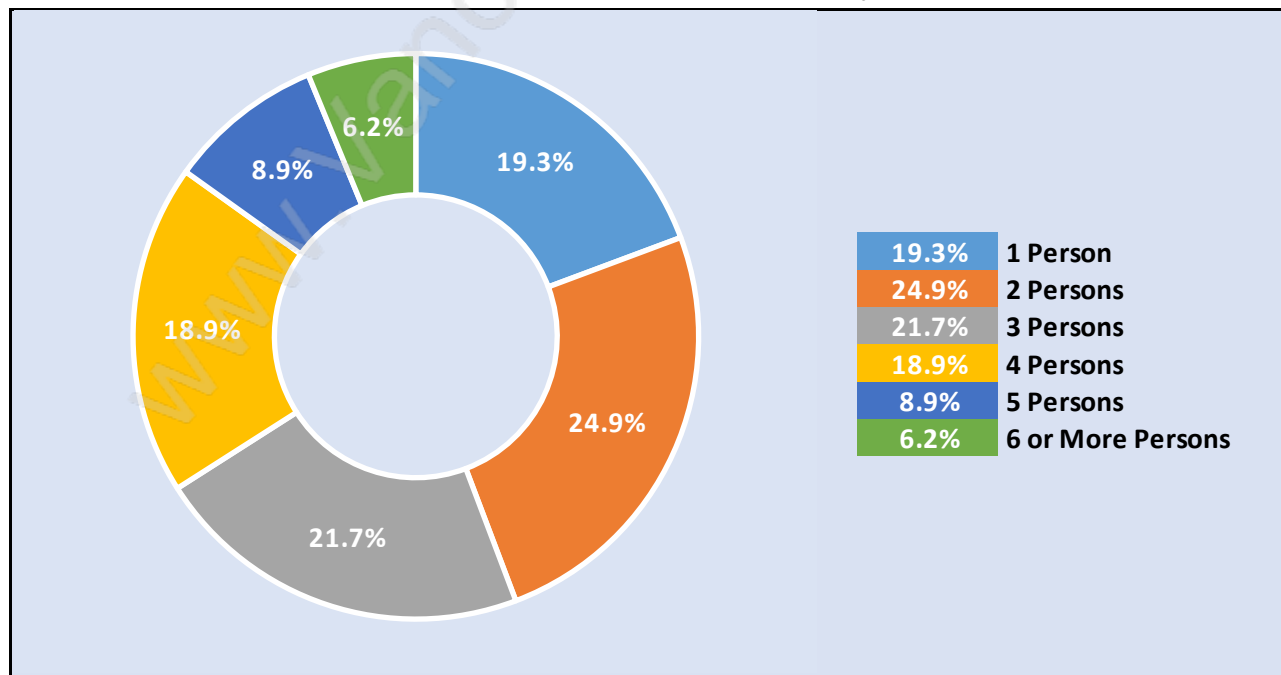
Family Structure in Edmonds

Total Number of Families - 3,179 / Average Persons per Family - 3.2

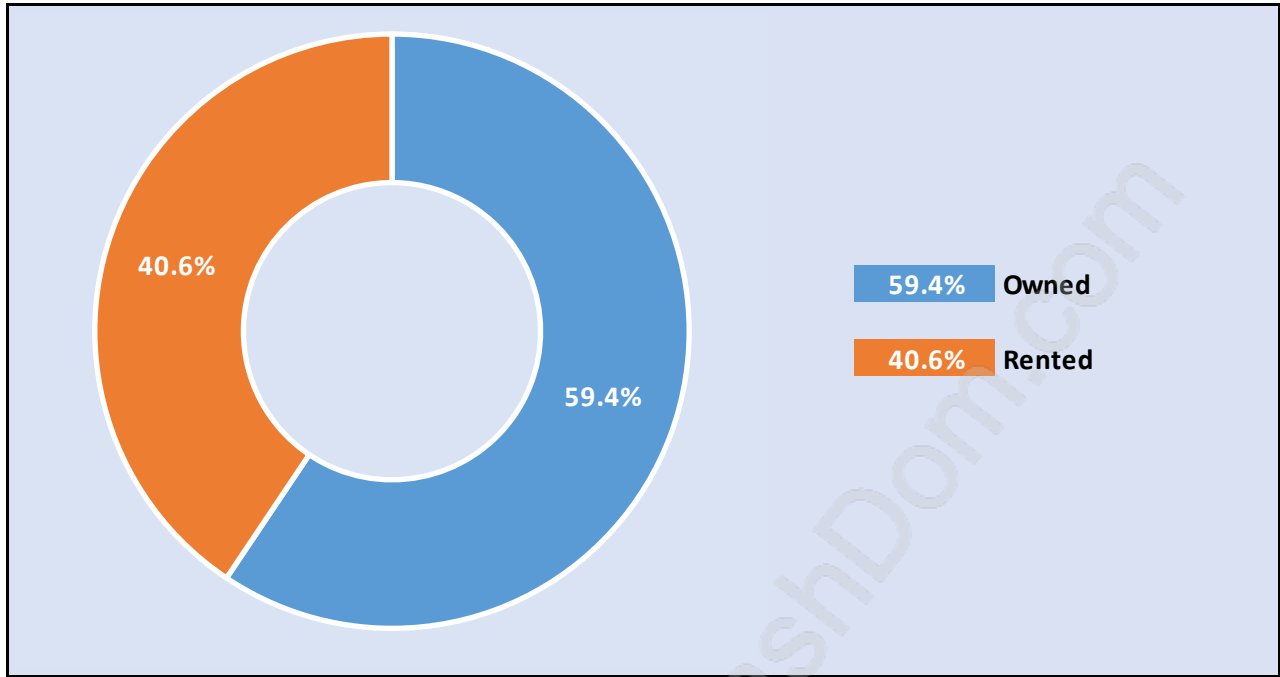


Households by Household Size in Edmonds

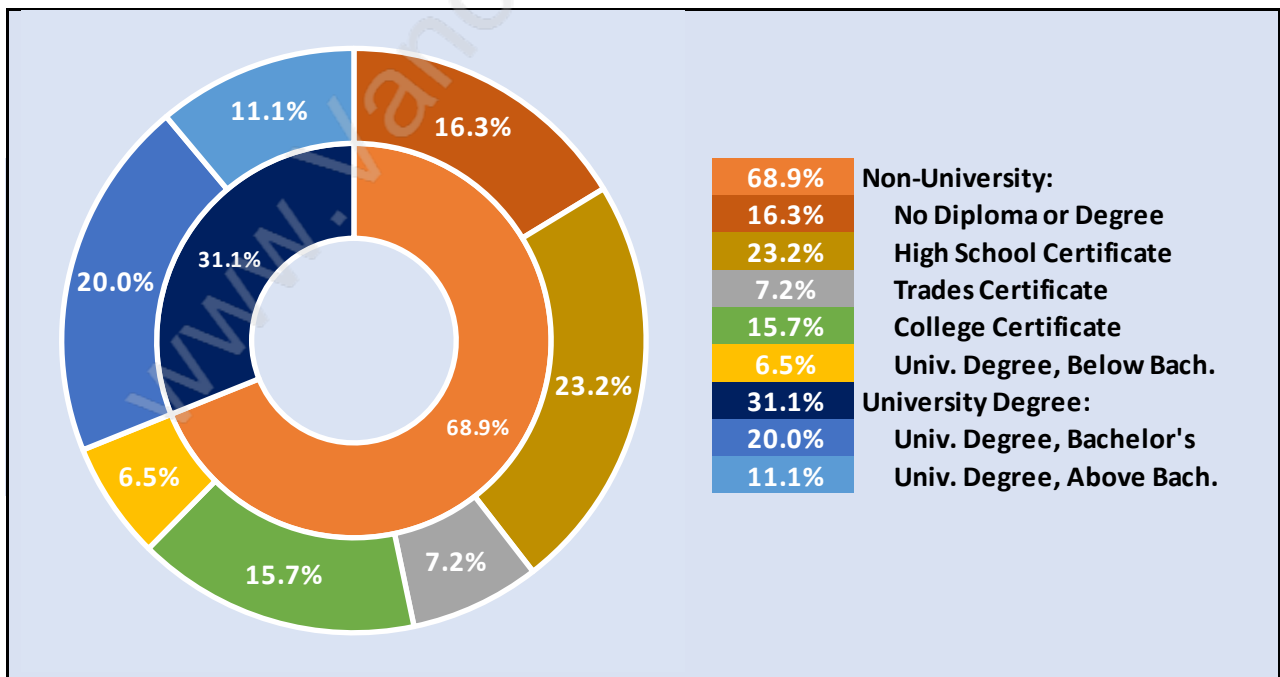
Total Number of Households - 4,254



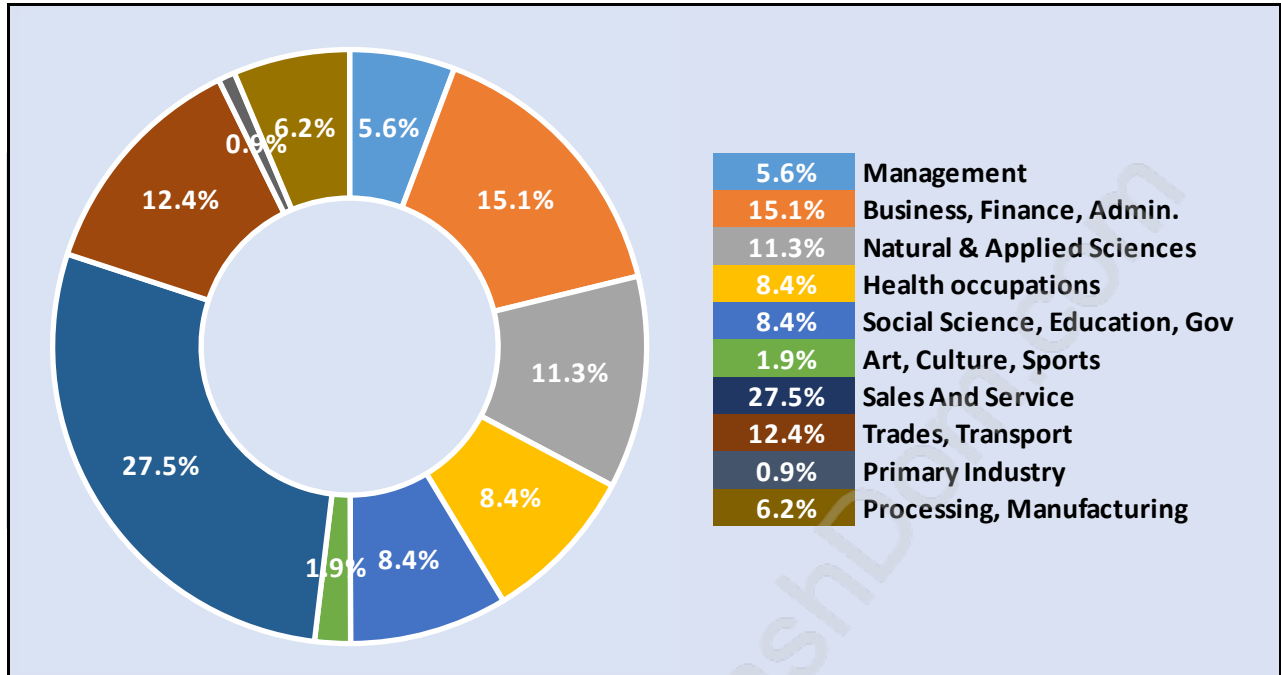
Dwellings in Edmonds



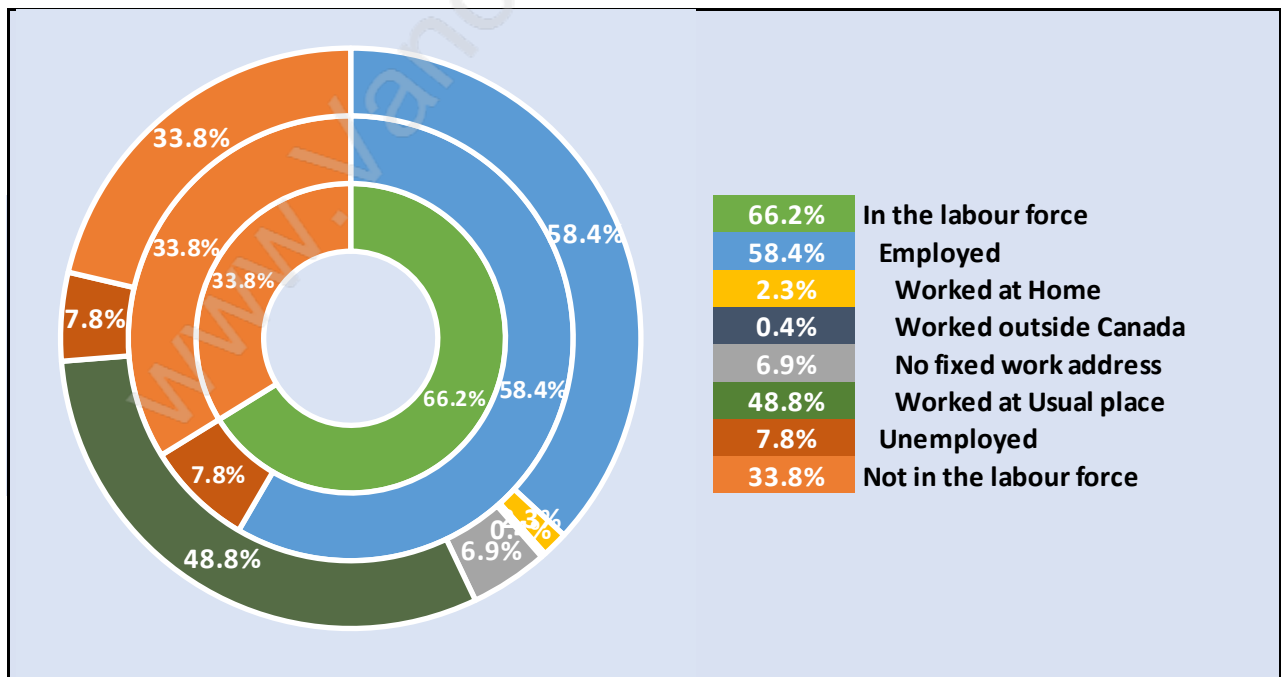
Population Age 15+ in Edmonds



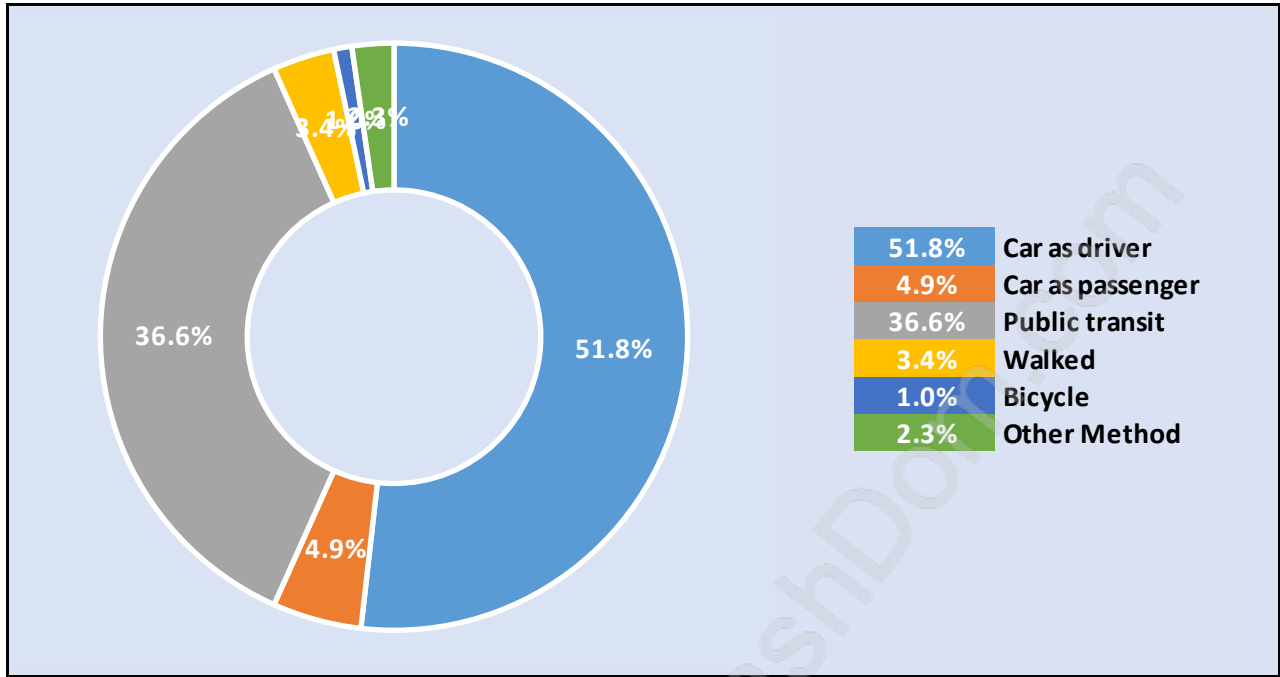
Labour Force by Occupation in Edmonds



Labour Force Participation in Edmonds

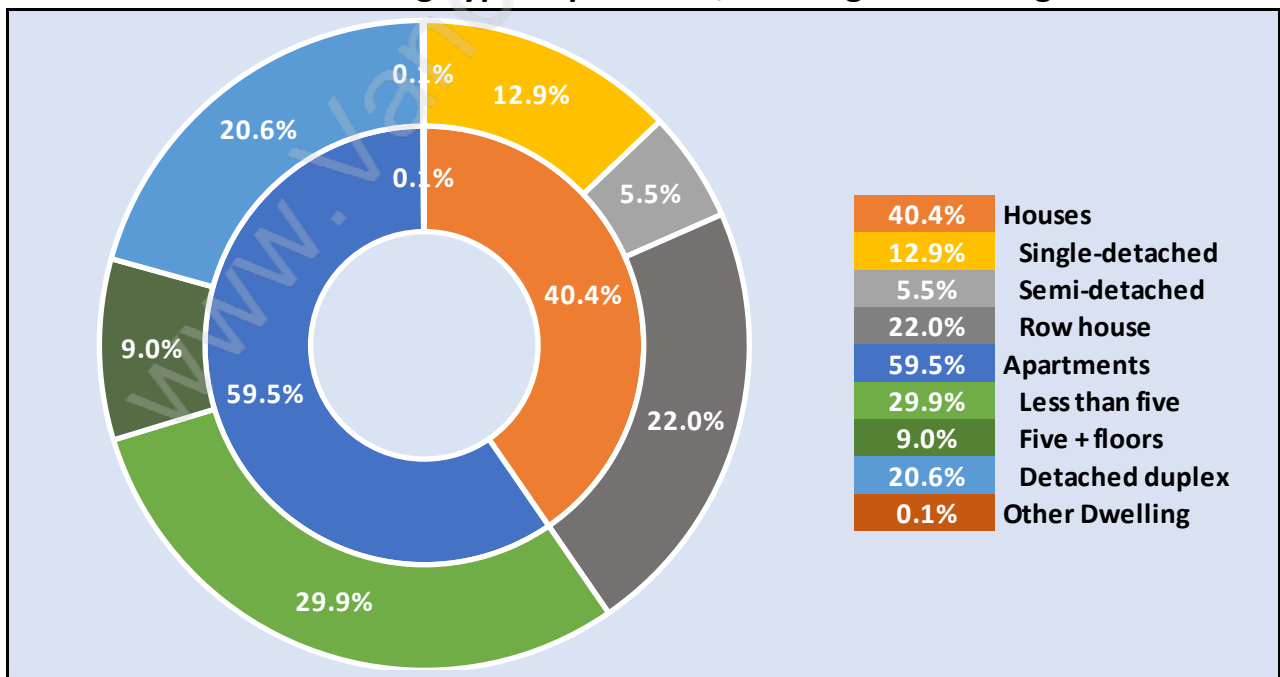


Travel To Work in (from) Edmonds



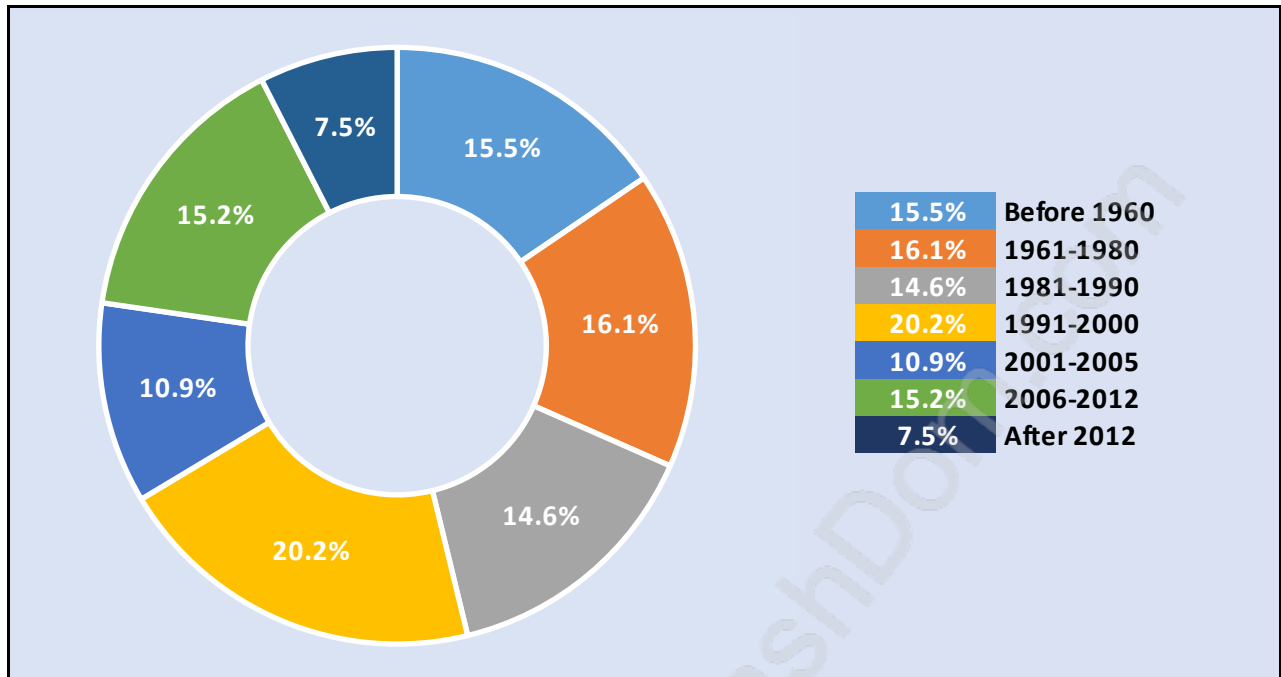
Occupied Dwellings by Structure Type in Edmonds

Dominant Bulding Type - Apartment, building low and high rise

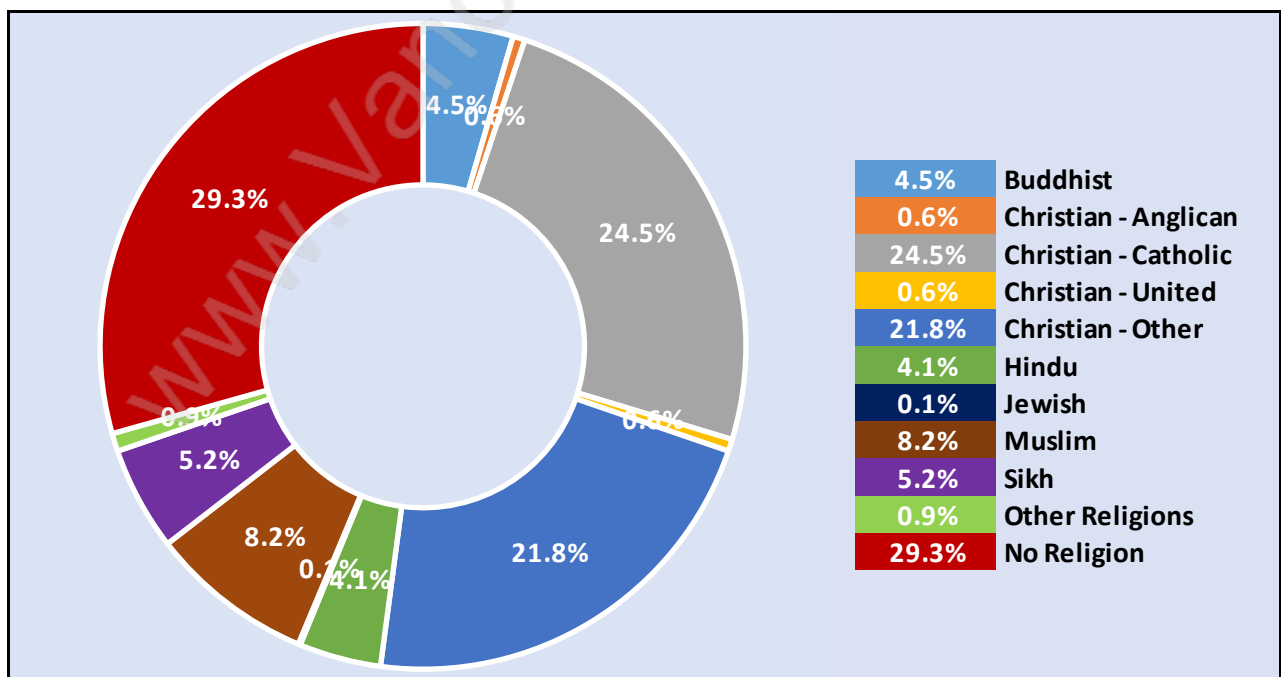


Private Dwellings by Period of Construction in Edmonds

Dominant Period of Construction - 1991-2000



Population by Religion in Edmonds



Population by Home Languages in Edmonds

